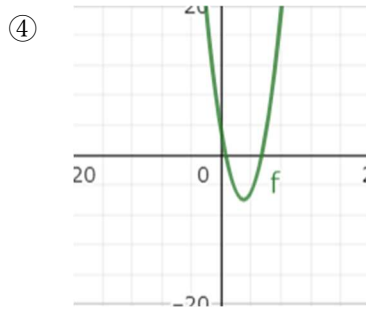
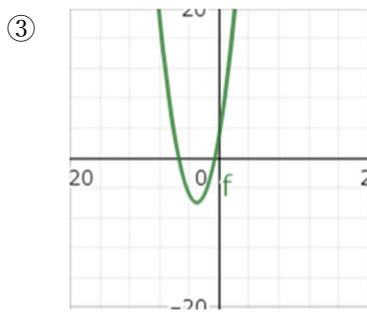
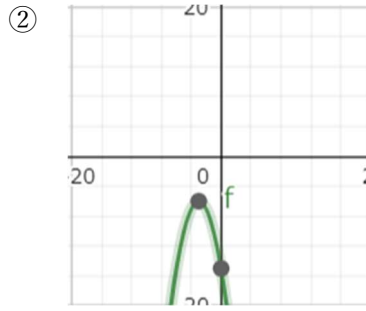
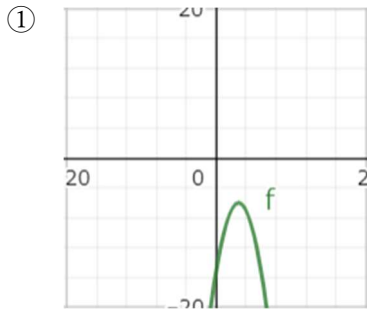
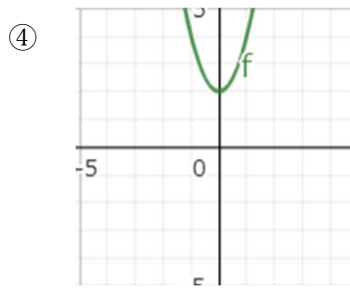
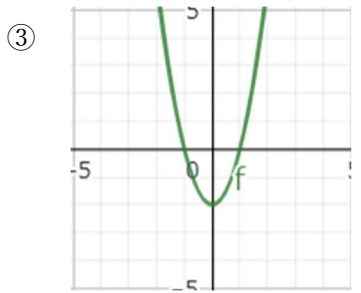
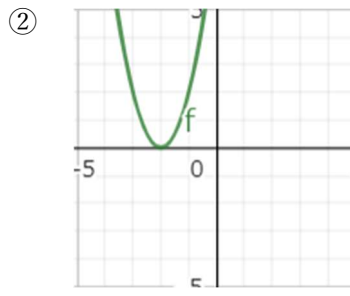
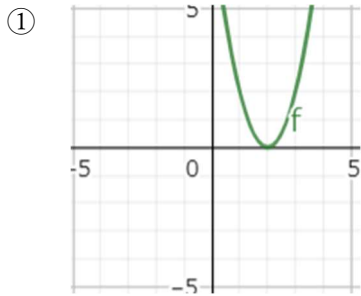


■ 3-2 : 2次関数のグラフの概形

3-2-1 $y = -(x + 3)^2 - 6$ のグラフの概形はどれ？

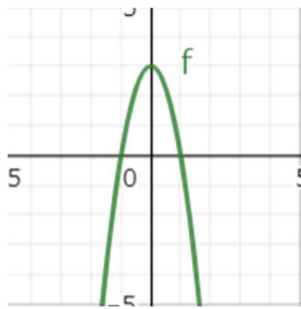


3-2-2 $y = 2(x + 2)^2$ のグラフの概形はどれ？

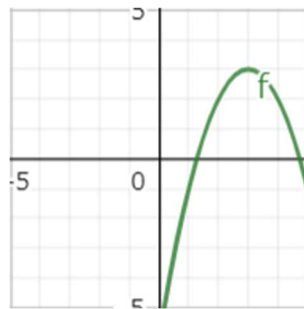


3-2-3 $y = -3x^2 + 3$ のグラフの概形はどれ？

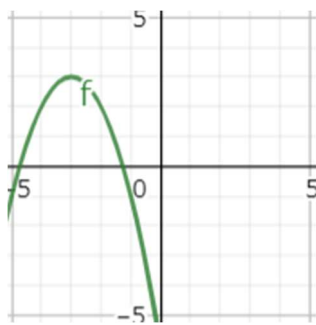
①



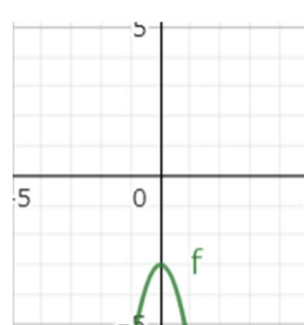
②



③

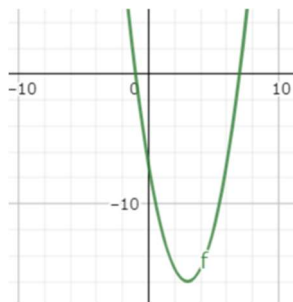


④

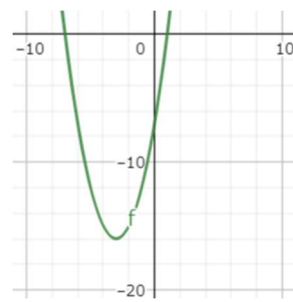


3-2-4 $y = x^2 - 6x - 7$ のグラフの概形はどれ？

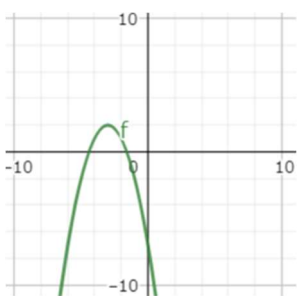
①



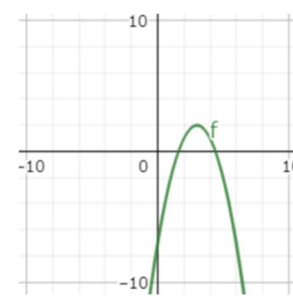
②



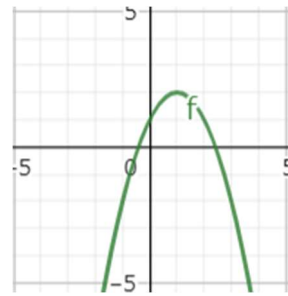
③



④



3-2-5 $y = a(x - p)^2 + 2$ のグラフの概形が右の図とき、
 a と p の符号の組み合わせとして正しいものはどれ？



- ① $a < 0, p < 0$
- ② $a < 0, p > 0$
- ③ $a > 0, p < 0$
- ④ $a > 0, p > 0$

(おまけ：高認より少し難しい)

3-2-6 $y = -x^2 - 6x - 7$ のグラフの概形はどれ？

